

State of Wyoming Corner Record

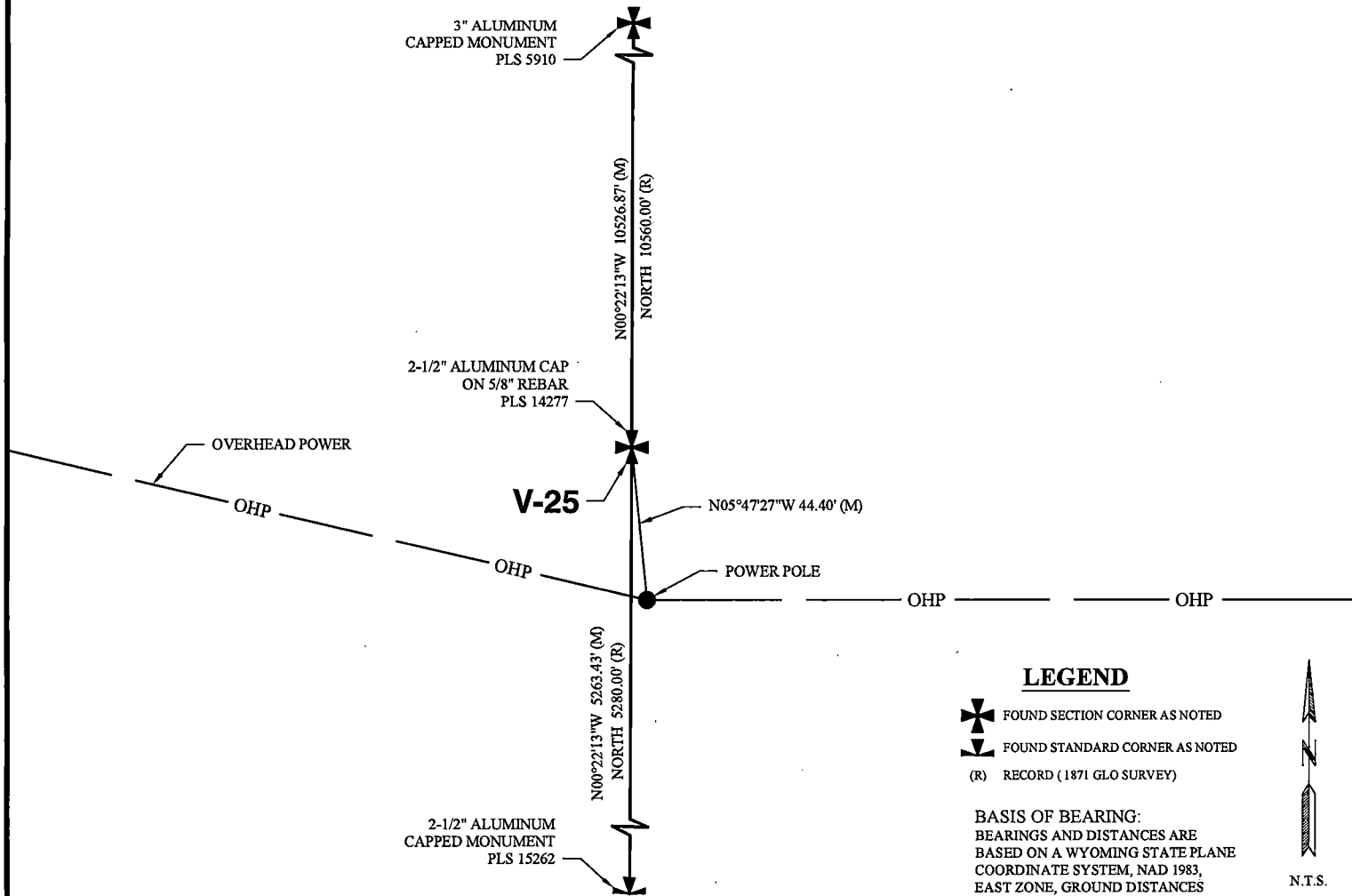
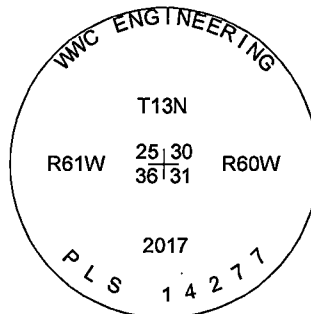
(In compliance with the CORNER PERPETUATION AND FILING ACT, Wyoming Statutes, 1997, Section 33-29-140, et seq., and the Rules and Regulations of the Board of Registration for Professional Engineers and Professional Land Surveyors)

Reverse side of this form may be used if more space is needed.

Record of original survey and citation of source of historical information (if corner is lost or obliterated.) Description of corner monumentation evidence found and/or monument and accessories established to perpetuate the location of this corner. Sketch of relative location of monument, accessories, and reference points with course and distance to adjacent corner(s) (if determined in this survey). Method and rationale for reestablishment of lost or obliterated corner.

EVIDENCE RECORD: 1871 GLO Survey: North along the east boundary of section 36, 80.00 chains. Set a sand stone 19"x12"x9" for corner to sections 25, 36, 30 & 31.

EVIDENCE FOUND: August 2017: Sand stone from 1871 GLO survey not found. Set a 2 1/2" aluminum cap marked as shown on a 5/8" rebar, 20" long, 2" above ground at single proportionate position between northeast corner of section 24 and standard corner common to sections 36 & 31.



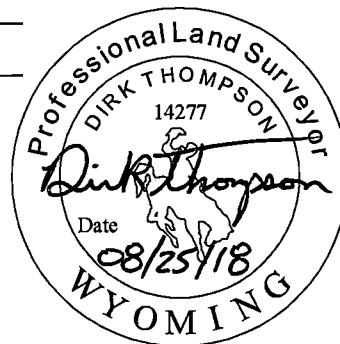
Date of Field Work: August 23, 2017 Office Reference: 2017-135

CROSS INDEX DIAGRAM

| | | | | | | | | | | | | | | | | | | | | | | | | | | |
|---|---|----|---|---|----|---|---|---|---|----|----|----|----|----|----|----|----|----|----|----|----|----|----|----|----|---|
| | 1 | 2 | 3 | 4 | 5 | 6 | 7 | 8 | 9 | 10 | 11 | 12 | 13 | 14 | 15 | 16 | 17 | 18 | 19 | 20 | 21 | 22 | 23 | 24 | 25 | |
| A | | | | | | | | | | | | | | | | | | | | | | | | | | A |
| B | | | | | | | | | | | | | | | | | | | | | | | | | | B |
| C | | 6 | | | 5 | | | | | 4 | | | | | 3 | | | | | | 2 | | | | 1 | C |
| D | | | | | | | | | | | | | | | | | | | | | | | | | | D |
| E | | | | | | | | | | | | | | | | | | | | | | | | | | E |
| F | | | | | | | | | | | | | | | | | | | | | | | | | | F |
| G | | | | | | | | | | | | | | | | | | | | | | | | | | G |
| H | | 7 | | | 8 | | | | | 9 | | | | | 10 | | | | | | 11 | | | | 12 | H |
| J | | | | | | | | | | | | | | | | | | | | | | | | | | J |
| K | | | | | | | | | | | | | | | | | | | | | | | | | | K |
| L | | 18 | | | 17 | | | | | 16 | | | | | 15 | | | | | | 14 | | | | 13 | L |
| M | | | | | | | | | | | | | | | | | | | | | | | | | | M |
| N | | | | | | | | | | | | | | | | | | | | | | | | | | N |
| O | | | | | | | | | | | | | | | | | | | | | | | | | | O |
| P | | 19 | | | 20 | | | | | 21 | | | | | 22 | | | | | | 23 | | | | 24 | P |
| Q | | | | | | | | | | | | | | | | | | | | | | | | | | Q |
| R | | | | | | | | | | | | | | | | | | | | | | | | | | R |
| S | | | | | | | | | | | | | | | | | | | | | | | | | | S |
| T | | 30 | | | 29 | | | | | 28 | | | | | 27 | | | | | | 26 | | | | 25 | T |
| U | | | | | | | | | | | | | | | | | | | | | | | | | | U |
| V | | | | | | | | | | | | | | | | | | | | | | | | | | V |
| W | | | | | | | | | | | | | | | | | | | | | | | | | | W |
| X | | 31 | | | 32 | | | | | 33 | | | | | 34 | | | | | | 35 | | | | 36 | X |
| Y | | | | | | | | | | | | | | | | | | | | | | | | | | Y |
| Z | | | | | | | | | | | | | | | | | | | | | | | | | | Z |

Land Surveyor / Firm / Address
Dirk Thompson
 WWC Engineering
 1849 Terra Avenue
 Sheridan, WY 82801
 Telephone: (307) 672-0761

This corner record was prepared by me or under my direction and supervision.
 SEAL & SIGNATURE



RECP #: 739884
 RECORDED 10/1/2018 AT 1:32 PM BK# 2598 PG# 318
 Debra K. Lee, CLERK OF LARAMIE COUNTY, WY PAGE 1 OF 1

Corner Name: Northeast Corner Section: 36 T 13N R 61W ; 6TH P.M. Cross-Index No.: V-25
 SBRPEPLS/PLSW: March 1994; PLSW January 1998